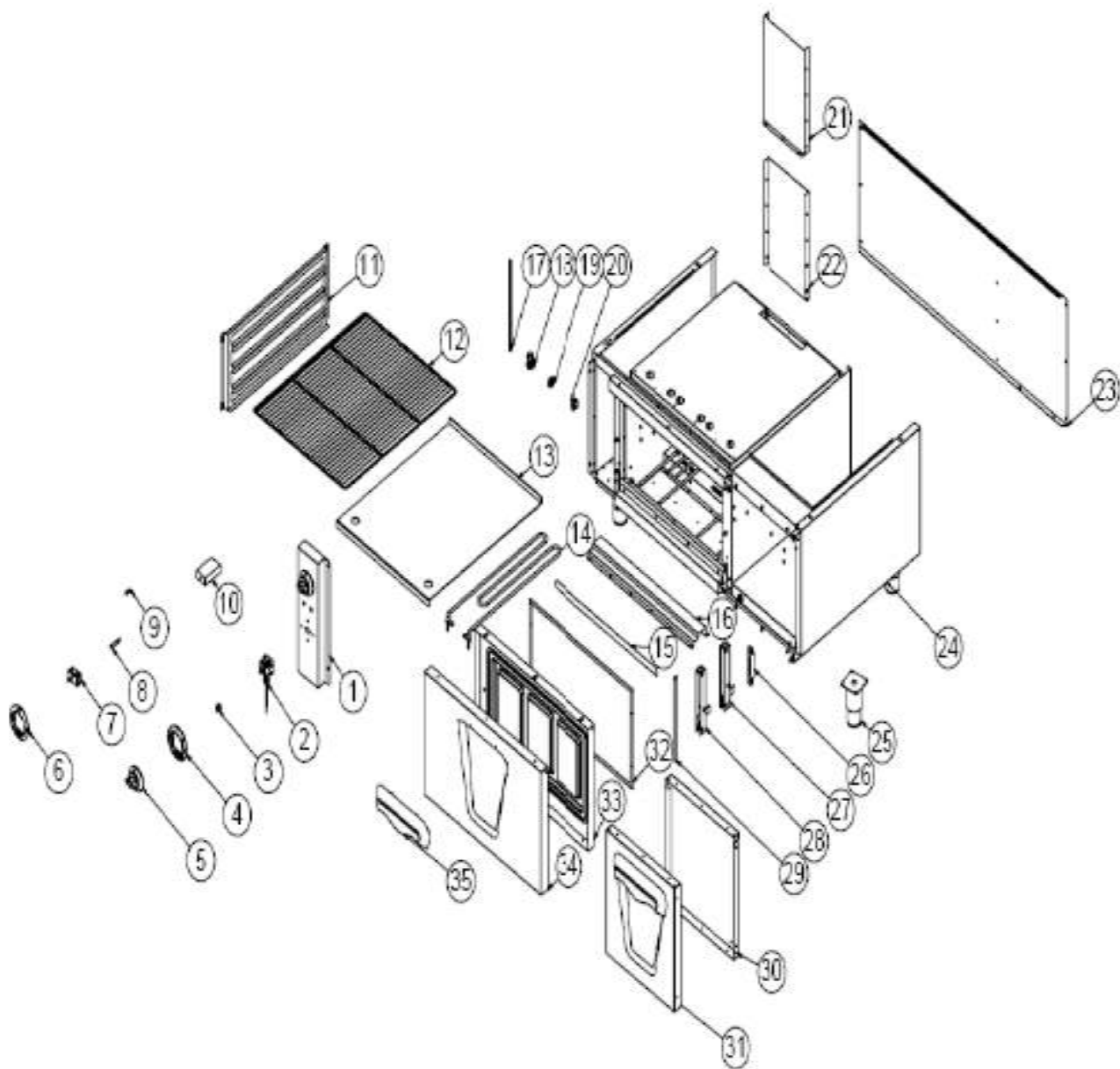


ШКАФ ЖАРОЧНЫЙ ЭЛЕКТРИЧЕСКИЙ 700 СЕРИИ TATRA ТЕО.127



ШКАФ ЖАРОЧНЫЙ ЭЛЕКТРИЧЕСКИЙ 700 СЕРИИ TATRA ТЕО.127

1	COVER SIDE SHEET	YSC-KNX.PG7-PN-0565	
2	50-300 °C THERMOSTAT	M.ELK-MEK-TRM3-001	
3	BUTTON SOCKET 6 MM	M.AKS-DGM-SKT-002	
4	50-300 °C BUTTON BUFFER	M.AKS-DGM-EMP-017	
5	BUTTON	M.AKS-DGM-EMP-024	
6	BUTTON BUFFER	M.AKS-DGM-EMP-019	
7	SWITCH 0-1	M.ELK-SLT-EGO-005	
8	SIGNAL LAMP	M.ELK-LMB-SNY-002	
9	M4 FRAME SPRING	M.YAY-PG-004	
10	0-3 STAGE SWITCH	M.ELK-SLT-EGO-004	
11	SHELF SHEET METAL	YSC-KNX.PG7-LZ-0494	
12	WIRE SHELF 650*530 MM	M.AKS-SPT-TEL-008	
13	FLOOR SHEET	YSC-KNX.PG7-LZ-0525	
14	230V 1500W RESISTANCE	M.ELK-RZS-BRU-KFR-007	
15	UPPER ROVING SHEET	YSC-KNX.PG7-PN-0474	
16	UPPER FINISH SHEET	YSC-KNX.PG9-PN-0566	
17	CABLE PIPE	YBR-KNX.PG7-KS-0012	
18	PG-16 CABLE FITTING	JP.M.ELK-RKR-PLS-001	
19	NO:2 25 MM TERMINAL	M.ELK-KLM-RKL-4*4-SRY	
20	TERMINAL	M.ELK-KLM-PRS-001	
21	CHIMNEY INNER SHEET	YSC-KNX.PG7-PN-0650	
22	CHIMNEY OUTER SHEET	YSC-KNX.PG7-PN-0649	
23	BACK SHEET METAL	YSC-KNX.PG7-PN-0506	
24	CHASSIS	-	
25	15 CM LEG	M.AKS-AYK-INX-001	
26	JOINT RESISTANCE	M.AKS-MNT-KZN-004	
27	HINGE	M.AKS-MNT-KZN-003	
28	HINGE	M.AKS-MNT-KZN-002	
29	SIDE WIRE SHEET	YSC-KNX.PG7-PN-0475	
30	COVER INTERNAL SHEET	YSC-KNX.PG7-PN-0456	
31	COVER OUTER SHEET	YSC-KNX.PG7-LZ-0488	
32	GASKET	HCN-SLK-PG-001	
33	COVER INTERNAL SHEET	YSC-KNX.PG7-LZ-0695	
34	COVER SHEET	YSC-KNX.PG7-LZ-0920	
35	HANDLE	M.AKS-KLP-LUX-004	
